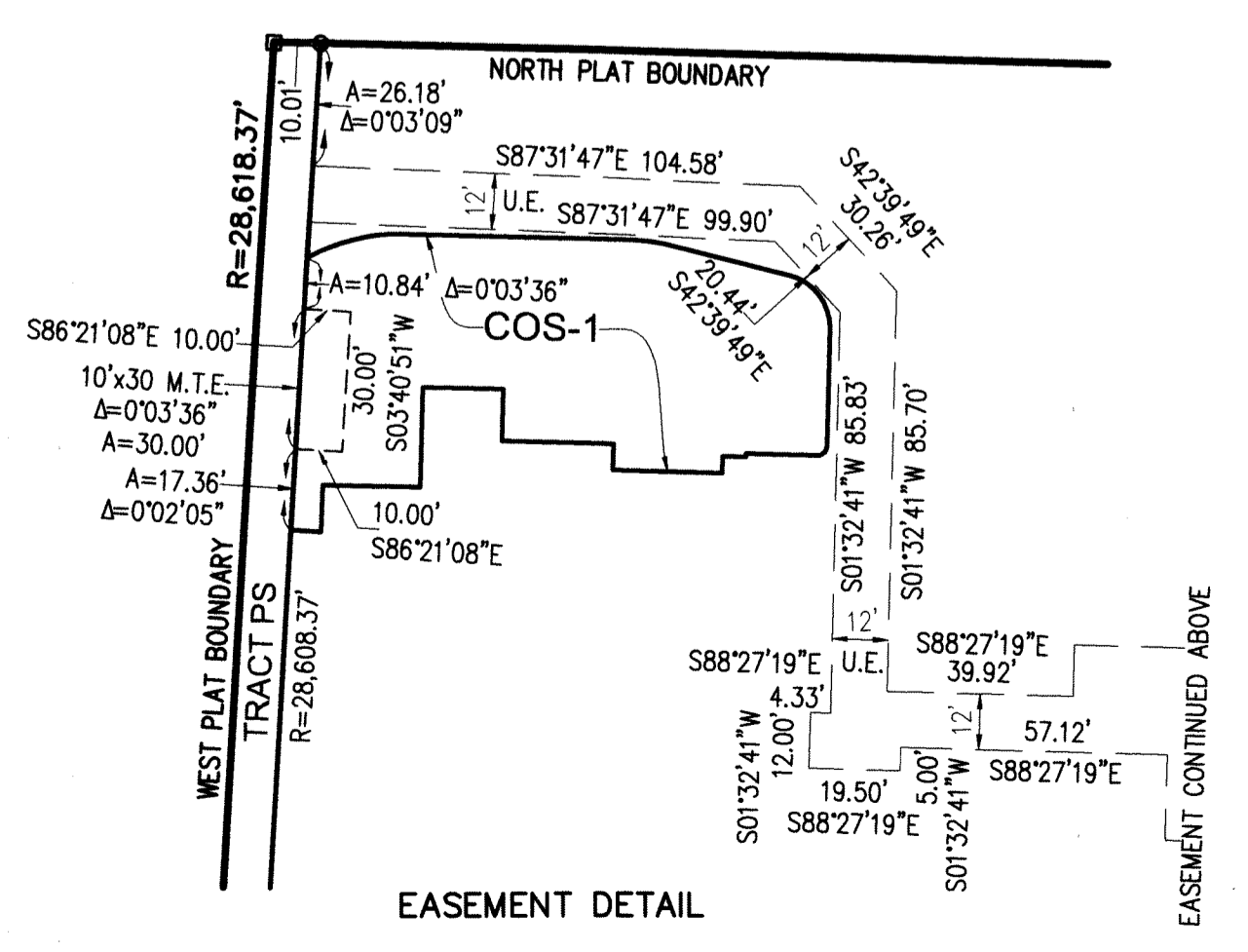
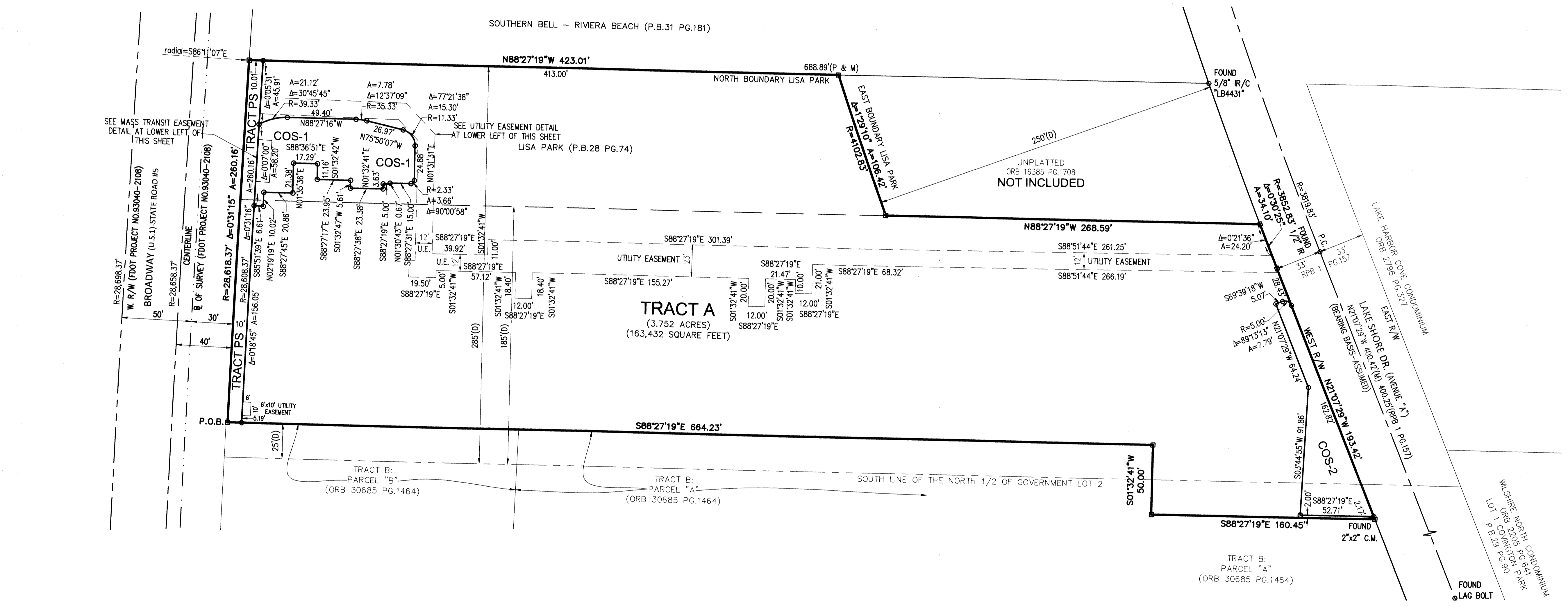


# BERKELEY LANDING

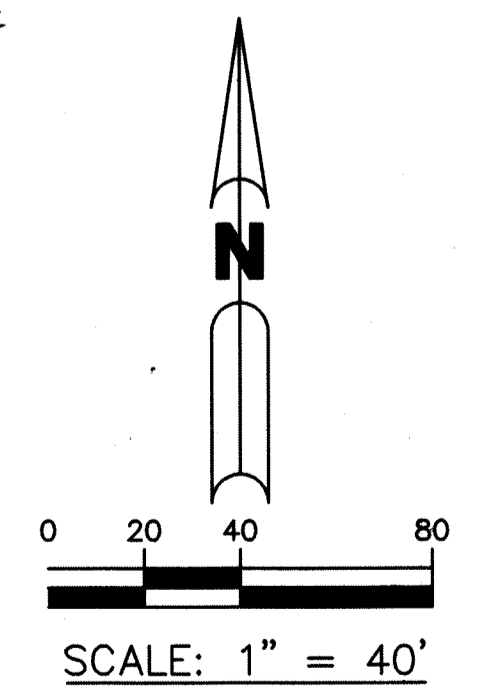
A REPLAT OF LISA PARK, RECORDED IN PLAT BOOK 28, PAGE 74,  
OF THE PUBLIC RECORDS OF PALM BEACH COUNTY, FLORIDA,  
AND A PORTION OF GOVERNMENT LOT 2, IN THE NORTHEAST QUARTER OF  
SECTION 28, TOWNSHIP 42 SOUTH, RANGE 43 EAST,  
CITY OF RIVIERA BEACH, PALM BEACH COUNTY, FLORIDA

SHEET 2 OF 2

77



- LEGEND:**
- ABBREVIATIONS:**  
P.O.B. - POINT OF BEGINNING  
ORB - OFFICIAL RECORD BOOK  
D.B. - DEED BOOK  
P.B. - PLAT BOOK  
R/PB - ROAD PLAT BOOK  
NO. - NUMBER  
PG. - PAGE  
R/W - RIGHT-OF-WAY  
SEC. - SECTION  
C - CENTERLINE  
NAD - NORTH AMERICAN DATUM  
PBC - PALM BEACH COUNTY
- SYMBOLS:**  
□ PERMANENT REFERENCE MONUMENT (P.R.M.), SET 4"x4" CONCRETE MONUMENT WITH DISK STAMPED "PRM LB6473", OR NAIL AND DISK IN CONCRETE STAMPED "PRM LB6473", UNLESS NOTED OTHERWISE  
○ MONUMENT - SET 1/2" IRON ROD WITH "BROWN & PHILLIPS" CAP
- LB - LICENSED BUSINESS**  
28/42/43 - SECTION 28, TOWNSHIP 42 SOUTH, RANGE 43 EAST  
U.E. - UTILITY EASEMENT  
D.E. - DRAINAGE EASEMENT  
M.T.E. - MASS TRANSIT EASEMENT  
FPL - FLORIDA POWER & LIGHT  
FDOT - FLORIDA DEPARTMENT OF TRANSPORTATION  
IR - IRON ROD  
IR/C - IRON ROD WITH CAP AS NOTED  
P.C. - POINT OF CURVATURE



PREPARING SURVEYOR & MAPPER'S STATEMENT  
THIS INSTRUMENT WAS PREPARED BY  
JOHN E. PHILLIPS III, P.S.M. 4826

**BROWN & PHILLIPS, INC.**  
CERTIFICATE OF AUTHORIZATION # LB 6473  
1860 OLD OKEECHOBEE RD., SUITE 509  
WEST PALM BEACH, FLORIDA 33409  
561-615-3988, 615-3986 FAX  
BROWN & PHILLIPS, INC. PROJECT NO.19-085